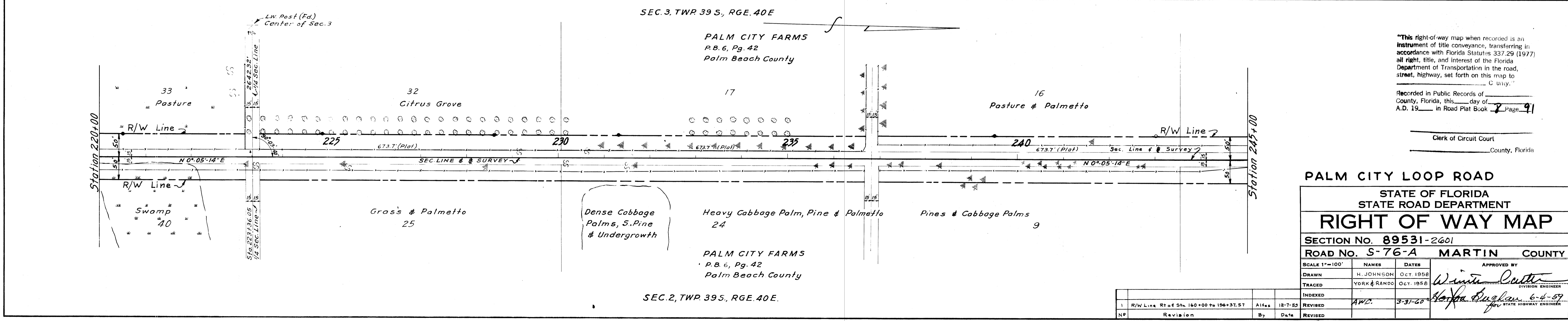
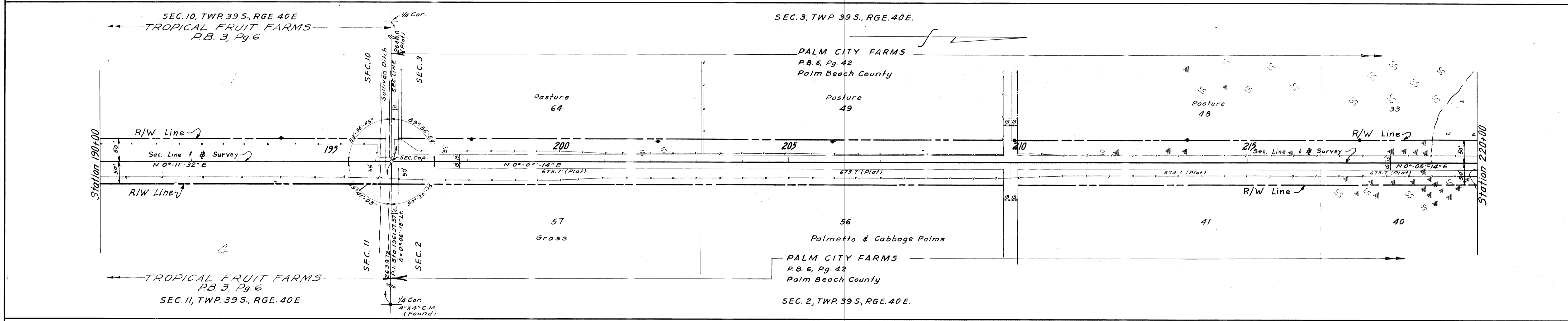
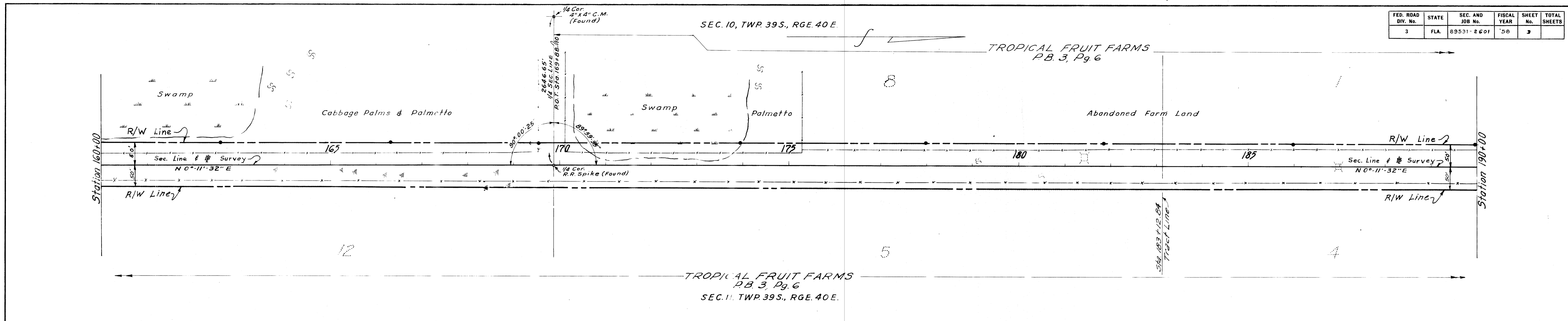


FED. ROAD DIV. No.	STATE	SEC. AND JOB No.	FISCAL YEAR	SHEET No.	TOTAL SHEETS
3	FLA.	89531-2601	'58	3	



"This right-of-way map when recorded is an instrument of title conveyance, transferring in accordance with Florida Statutes 337.29 (1977) all right, title, and interest of the Florida Department of Transportation in the road, street, highway, set forth on this map to _____ County, Florida, this _____ day of _____, A.D. 19____, in Road Plat Book _____ Page 41.

Clerk of Circuit Court
County, Florida

PALM CITY LOOP ROAD

STATE OF FLORIDA
STATE ROAD DEPARTMENT

RIGHT OF WAY MAP

SECTION No. 89531-2601
ROAD No. S-76-A MARTIN COUNTY

SCALE 1"=100'	NAMES	DATES	APPROVED BY
DRAWN	H. JOHNSON	OCT. 1958	<i>Winters Culler</i> DIVISION ENGINEER
TRACED	YORK & RANDO	OCT. 1958	
INDEXED			<i>Winters Culler</i> STATE HIGHWAY ENGINEER
REVISED	AWC	3-31-59	

NO.	REVISION	BY	DATE	REVISION
1	R/W Line Rt of Sta. 160+00 to 196+37.57	AWC	12-7-59	